



30 Florida Holiday Park Back Market Lane

Hemsby, Great Yarmouth, NR29 4HW

£25,000



30 Florida Holiday Park

Hemsby, Great Yarmouth, NR29 4HW

Aldreds are pleased to offer this very well presented two bedroom semi detached holiday chalet sitting on the popular Florida Holiday Park in the coastal village of Hemsby. This chalet offers accommodation including an open plan lounge/dining/kitchen area, two bedrooms and a new shower room. The property also benefits from double glazed windows and faces a sunny southerly direction. Outside there are communal lawned grounds and parking nearby. Close to local amenities. Sold furnished & Equipped.

Open Plan Lounge/Dining/Kitchen

Lounge/Dining Area

12'8" x 12'7" (3.86 x 3.84 (3.87 x 3.83))

Part double glazed uPVC entrance door to front, double glazed window to front aspect, tv point, meter storage cupboard, wood effect laminate flooring, open access to:-

Kitchen

7'1" x 6'0" (2.16 x 1.83 (2.17 x 1.82))

Double glazed window to side aspect, range of wood effect wall and matching base kitchen units with roll top work surface, integrated electric oven and hob, stainless steel sink and drainer, recess with fridge, wood effect laminate flooring, part tiled walls.

Shower Room

New suite comprising full width walk in tiled shower cubicle with electric shower fitting over, vanity unit with inset wash basin, part tiled walls, low level wc with concealed cistern, two frosted double glazed windows, tiled flooring.

Bedroom 1

9'1" x 8'0" (2.77 x 2.44)

Combination bunk with double and single beds, wood effect laminate flooring, corner storage cupboard, wall mounted electric heater, double glazed window to rear aspect with shutter blinds.

Bedroom 2

8'6" x 7'7" (2.59 x 2.31 (2.60 x 2.32))

Double bed and bedroom furniture, corner storage cupboard, double glazed window to rear aspect with shutter blinds.

Outside

The chalet sits in communal lawned gardens which face a southerly direction with parking nearby. There is a terrace seating area immediately in front of the property.





Tenure

Leasehold.

Recently extended lease which expires in 2069

Site opens from 1st March to 31st October.

Ground rent and maintenance/service charges for 2022/23 = £1750 approximately

No dogs allowed.

Services

Mains water, electric and drainage.

Council Tax

Great Yarmouth Borough Council - Band 'A' (10% reduction applies for holiday use).

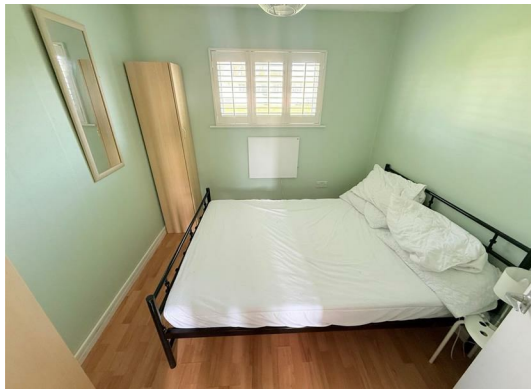
Location

Hemsby is a coastal village approximately 7 miles north of Great Yarmouth. The tourist-based part of the village lies along Beach Road and is commonly known as Hemsby Beach. At the beach end of the road are a number of cafes, shops and amusement arcades, ten-pin bowling, bingo, a play area and many different machines. A variety of seaside-style cafes and restaurants are available, offering sit-down meals, take-away fish and chips and Chinese food. Fun fairs, crazy golf courses and children's rides also feature on a number of sites along the street.

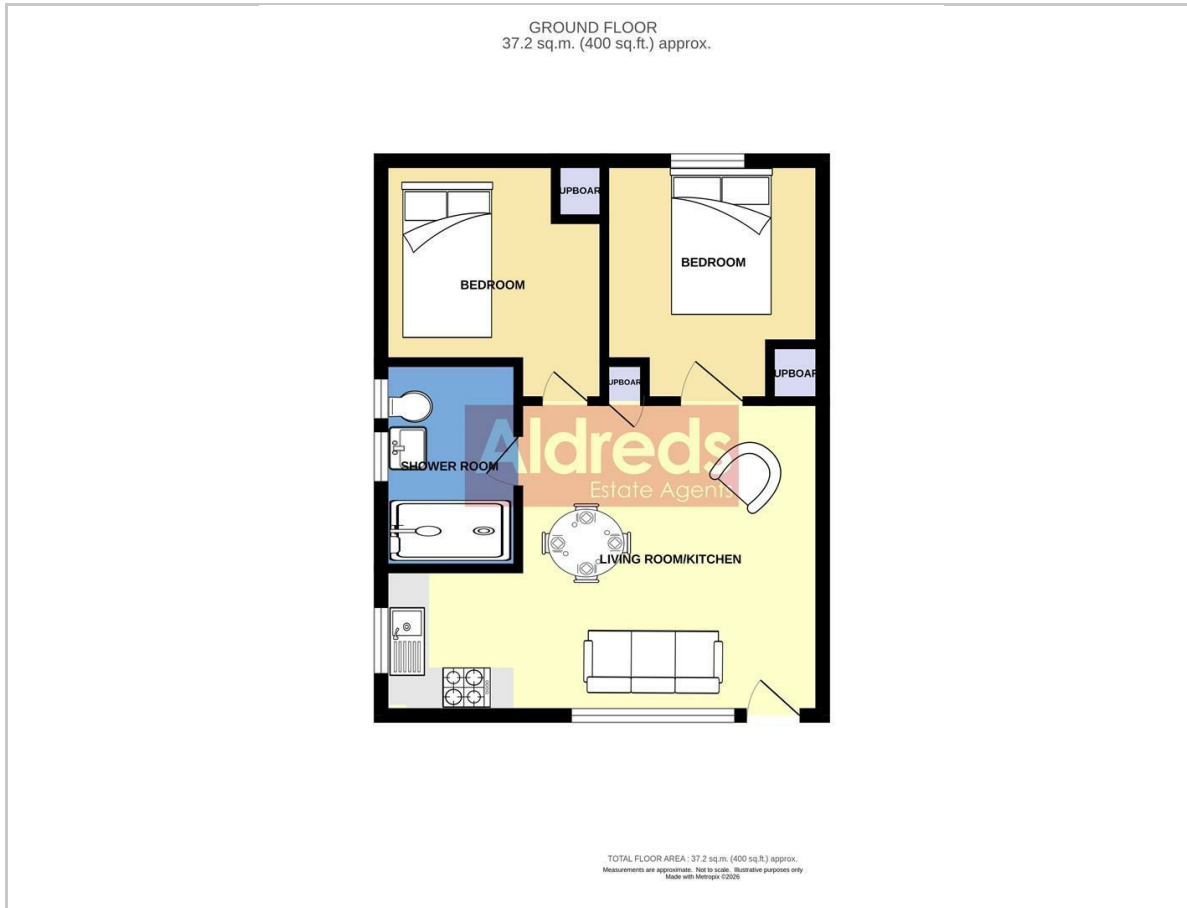
Directions

From the Yarmouth office head north along the A149 Caister Road, continue past the Yarmouth Stadium, at the roundabout turn left onto the Caister Bypass, continue over the next roundabout into Jack Chase Way, continue over the next roundabout into Scratby Road, continue into Yarmouth Road, turn right into Newport Road, continue for approximately 200 yards turn left into Market Lane, the chalet can be found after a short distance on the left hand side.

Ref: Y12688/04/27/CF



Floor Plan



Viewing

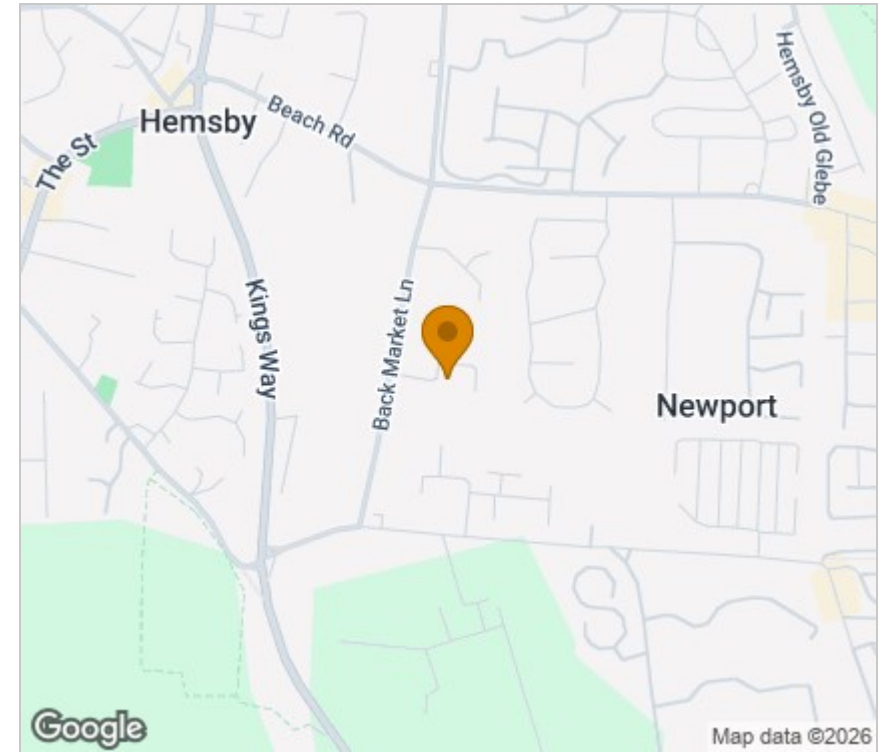
Please contact our Aldreds Great Yarmouth Office on 01493 844891 if you wish to arrange a viewing appointment for this property or require further information.

Disclaimer

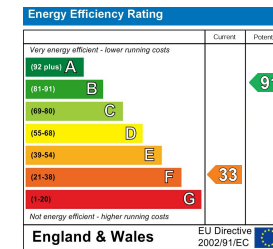
These particulars are issued on an understanding that all negotiations shall be conducted through Messrs. Aldreds. Please note: Messrs. Aldreds for themselves and for the vendors or lessors of this property whose agents they are given notice that: 1. Particulars are set out as a general outline only for guidance of intending purchasers or lessees, and do not constitute nor constitute part of, an offer or contract. 2. All descriptions, dimensions, references to condition and necessary permissions for use and occupation, and other details are given without responsibility and any intending purchasers or tenants should not rely on them as statements or representations of fact but must satisfy themselves by inspection or otherwise as to the correctness of each of them. 3. No person in the employment of Messrs. Aldreds has any authority to make or give any representation or warranty whatever in relation to this property. 4. If you are proposing to visit the property and are travelling some distance please check with Aldreds on the issue of availability prior to travelling. 5. Aldreds Property Consultants and associated services may offer additional services to the prospective purchaser for which they will be entitled to receive a commission.

Aldreds are pleased to be working with Mortgage Advice Bureau. They're an award-winning mortgage broker with over 1,400 advisers across the UK, and have access to over 12,000 mortgage products from over 90 lenders. Aldreds Estate Agents Ltd receive a commission of £200 on each completed case. Your home may be repossessed if you do not keep up repayments on your mortgage. There may be a fee for mortgage advice. The actual amount you pay will depend upon your circumstances. The fee is up to 1%, but a typical fee is 0.3% of the amount borrowed. Mortgage Advice Bureau is a trading name of Mortgage Seeker Limited which is an appointed representative of Mortgage Advice Bureau Limited and Mortgage Advice Bureau (Derby) Limited which are authorised and regulated by the Financial Conduct Authority. Mortgage Seeker Limited Registered Office: Lovewell Blake, Sixty Six North Quay, Great Yarmouth, Norfolk, NR30 1HE. Registered in England Number: 03721415. 6. Potential purchasers should check with their providers that the broadband and mobile phone coverage they would require is available.

Area Map



Energy Efficiency Graph



17 Hall Quay, Great Yarmouth, Norfolk, NR30 1HJ
Tel: 01493 844891 Email: yarmouth@aldreds.co.uk <https://www.aldreds.co.uk/>

Registered in England Reg. No. 08945751 Registered Office: 17 Hall Quay, Great Yarmouth, Norfolk NR30 1HJ
Directors: Mark Duffield B.S.c. FRICS. Dan Crawley MNAEA Paul Lambert MNAEA